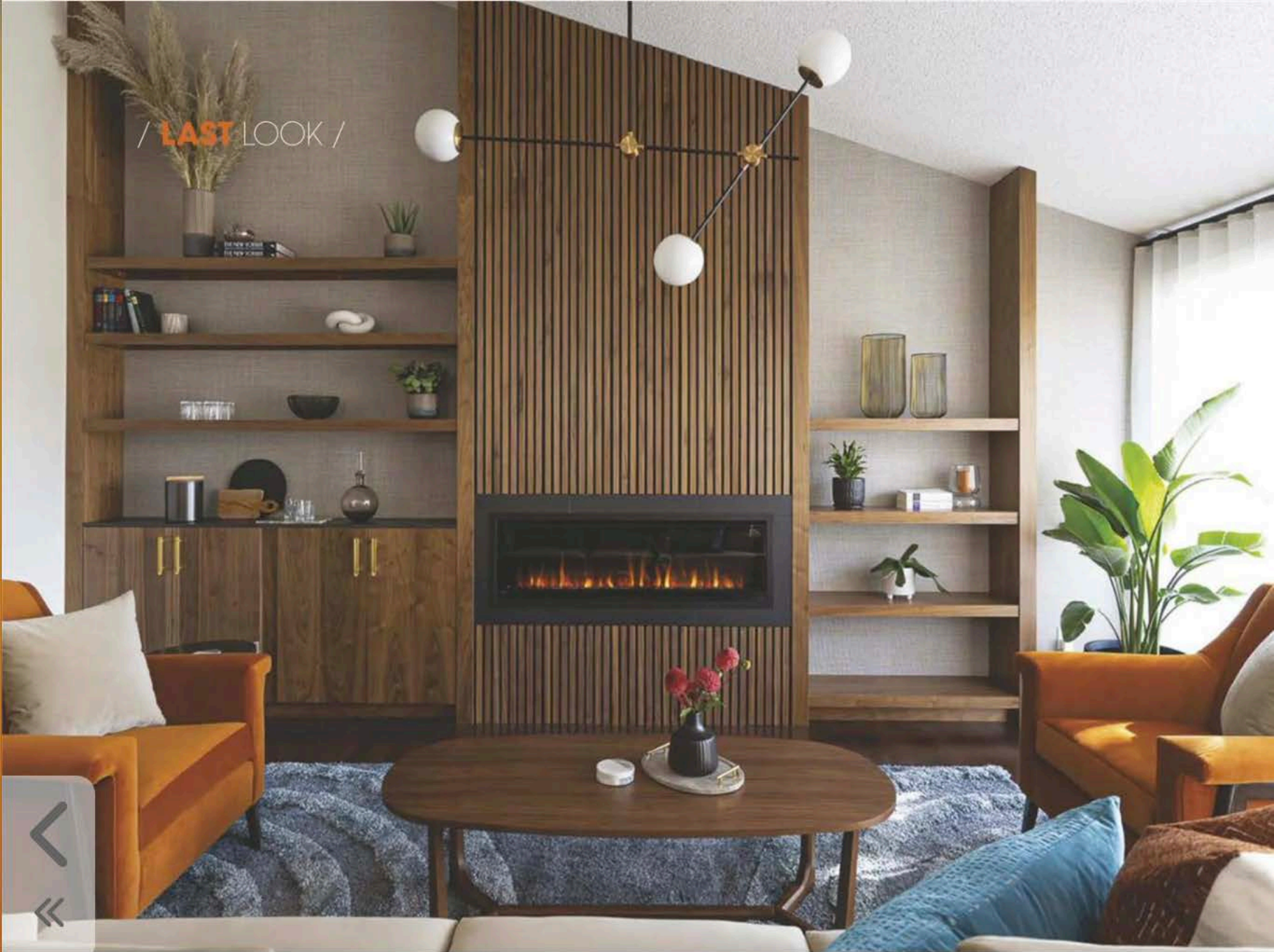


/ LAST LOOK /



Double the Design

This fireplace/bookcase combines two beloved focal points of Mid Century Modern design.

By IAN McMASTER

Photography by Valerie Schneider, Point in Time Photography

WHEN AN OPPORTUNITY PRESENTS ITSELF to build a space that embodies a style and a mood, you take it. Award-winning designer Charlene Threatful of Lush Interiors (lushinteriors.com) recently undertook a project that breathed new life into a once scant living room in Calgary, Canada. The clients expressed a desire for a space that would serve as an entertainment hub, complete with a fireplace and bar, all while being functional for a family.

Drawing on her love of MCM design, Charlene was well-equipped to infuse the space with a classic yet fresh look. "It is such a timeless design, and we love working with all the different [MCM] design elements, from lighting to tile and millwork. It's so creative," Charlene.

The shape of the space served as a muse. "Our jumping-off point was the sloped ceiling and we wanted to pay homage to the style," the designer says. Charlene strategically placed the fireplace on the north wall, accentuating the ceiling's slope. "We used a fluted walnut detail

to elevate and create interest and a simple black-slate surround," she explains. This careful selection of materials ensured a seamless transition between the fireplace and adjacent spaces—particularly the bar area, where the same slate was integrated into the countertop.

To create even more warmth, Charlene used a textured wallpaper behind the open shelving. This choice was echoed in the sheer draperies, which not only diffuse light beautifully but also add a layer of sophistication. "We used a combination of man-made and natural materials, incorporating a rich contrasting color palette of rust and indigo against a neutral backdrop of sand-colored texture in the wallpaper, drapes and sofa," Charlene adds.

The modern light fixture, featuring black and brass accents, and brushed-brass hardware with MCM lines completed the look. "It's 'Mad Men' meets modern and works perfectly," Charlene says. ☼

atomic
MID CENTURY MARVELS
ranch

THE
DESIGN
ISSUE
A RETROSPECTIVE

MASTERFUL MODERN



The **ARTFUL HOME**
Inspiring interior spaces



RETRO REVIVAL

VINTAGE SELLERS YOU NEED TO KNOW

*Saul Bass, Jens Quistgaard
and Googie Design*

ATOMIC RANCH
THE DESIGN ISSUE 2023
\$10.99 U.S. DISPLAY UNTIL 01/09/2024
EG MEDIA INVESTMENTS LLC

